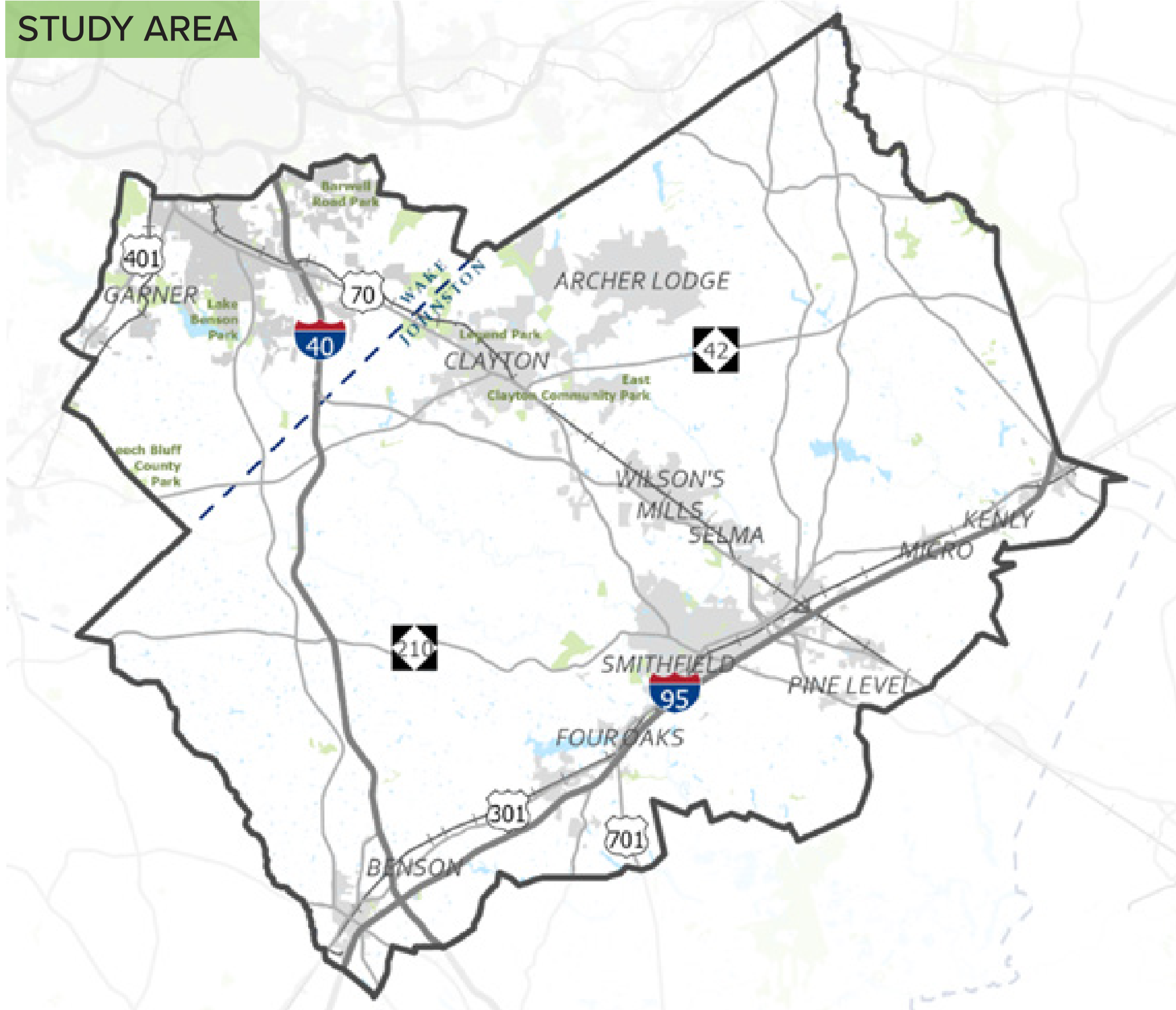


## PROJECT OVERVIEW

The Capital Area Metropolitan Planning Organization (CAMPO) is updating the 2017 Southeast Area Study (SEAS) to refresh its recommendations for land use and transportation. You can learn more about the study on the project website.

### STUDY AREA



### Critical Transportation Issues

We also asked you what the most critical transportation issues in the study area are, and you answered:



Traffic  
Congestion



Lack of  
Transit



Safety  
Issues

## WHAT WE HEARD FROM YOU

Last summer, as part of Phase I Engagement, we asked you about your vision for the SEAS Update. From that feedback we updated the Guiding Principles from the 2017 SEAS to reflect the new goals of the SEAS Update.

### Guiding Principles



#### LIVABILITY

Enhance and promote our region's quality of life through transportation and land use decisions that equitably support public health, education, parks and recreation, public art, and local character.



#### TRAFFIC FLOW

Make it easier to move within and through our region by reducing congestion and improving roadway operations.



#### SUSTAINABLE GROWTH

Blend development decisions and transportation strategies to promote and sustain employment and population growth by offering housing and neighborhood choices to meet diverse needs while preserving the area's natural features.



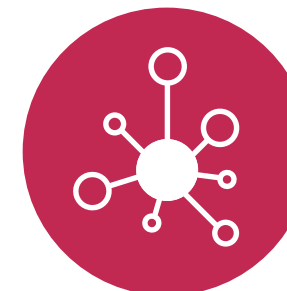
#### TRAVEL SAFETY

Promote a safer, more secure transportation system by reducing crashes, enhancing reliability and predictability, and improving emergency coordination.



#### ACTIVE TRANSPORTATION

Integrate our transportation network to provide travel choices, especially walking and cycling, for all users, regardless of age and ability.



#### NETWORK CONNECTIVITY

Link local and regional destinations through improved connections and enhanced integration among travel modes.



#### ECONOMIC VITALITY

Grow our economy through a transportation network by connecting residents to jobs, goods, services, and opportunities within and beyond our region.



#### FREIGHT MOVEMENT

Support global competitiveness of our region through a transportation network that efficiently moves goods and services.

Visit the project website to read the full summary of Phase 1 Engagement.

## WHAT WE'VE DONE SINCE

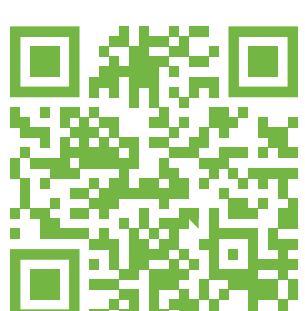
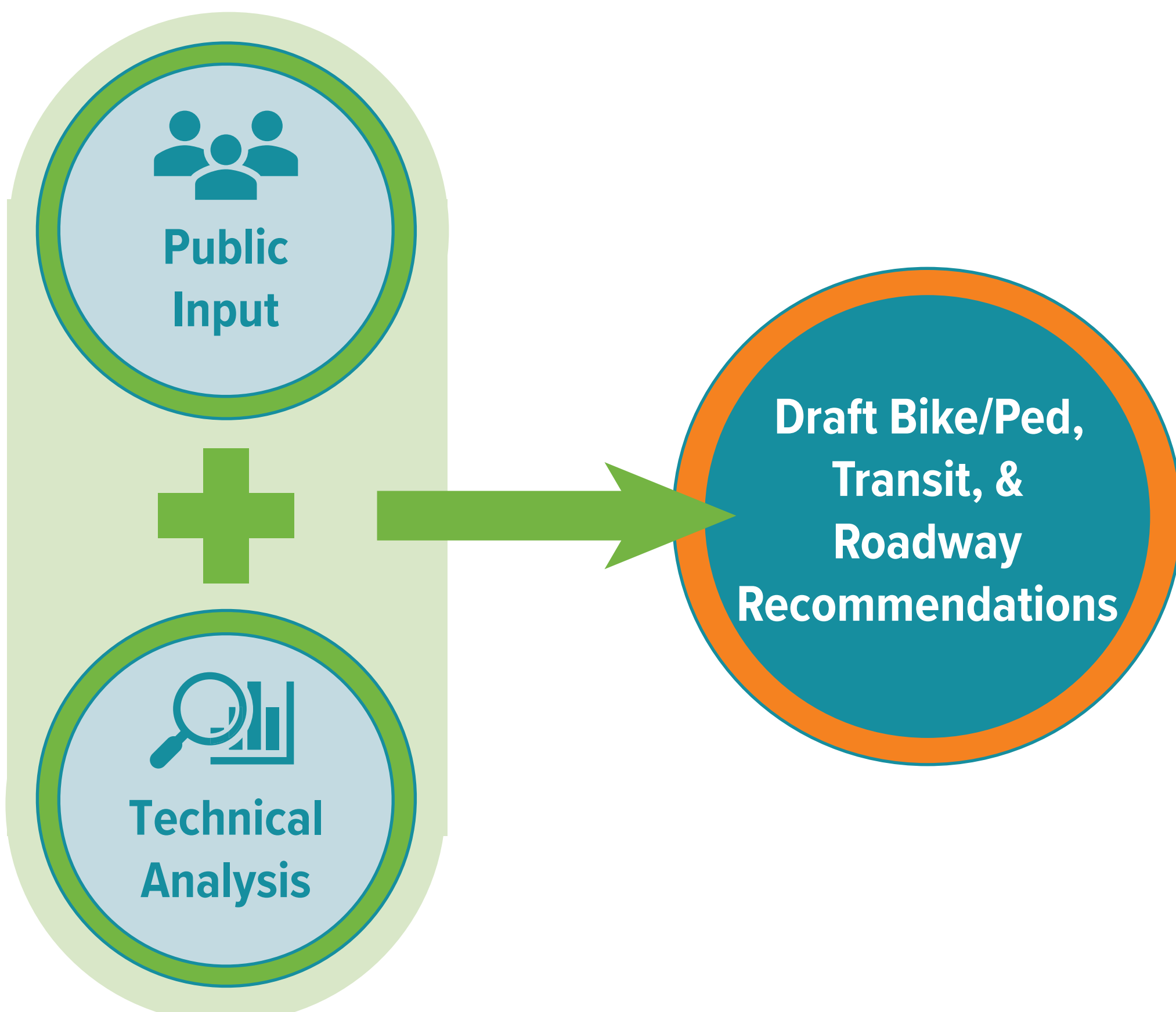
In the year since Phase 1 Engagement, we've completed the technical needs and gaps analysis. The results of the analysis combined with the public input helped the project team create draft bicycle and pedestrian, transit, and roadway recommendations.

## WHAT WE NEED FROM YOU

We want to hear from you! We're asking for your feedback on our draft multimodal recommendations.

**Do the recommendations address the issues you care about?**

We also want to know about your priorities. **What's important to you?** We need your feedback on how we should prioritize these projects.



[seareastudyupdate.com](http://seareastudyupdate.com)

**Take the online public survey!**